

KIENE CC2000 CLUTCH CADDY

ASSEMBLY INSTRUCTIONS

The Kiene CC2000 Clutch Caddy is shipped partially assembled. Before starting assembly, use the following Packing List and the Parts Illustration to make certain that all parts have been received and that no damage has occurred.

The Clutch Caddy is packaged and shipped as follows:

- (1) Arm Assembly, including:
 - (1) CC2000-01 Chassis
 - (1) CC2000-30 Pivot Block
 - (2) CC2000-34 Parallel Arm
 - (1) CC2000-39 Lifting Arm Assembly
- (4) 300-00266 Swivel Caster
- (1) CC2000-11 Right Leg
- (1) CC2000-14 Left Leg
- (1) CC2000-16 Rear Cross Member
- (1) CC2000-20 Jack
- (1) CC2000-44 Splined Shaft
- (1) CC2000-49 Holder Assembly
- (1) Hardware Kit, consisting of:
 - (10) 201-64277 3/8-16 X 1" lg. Hex Head Cap Screw
 - (10) 207-61024 3/8 Split Lock Washer
 - (4) 202-61440 1/2-13 Hex Nut
 - (4) 207-61028 1/2 Split Lock Washer
 - (2) 241-62035 Snap Ring (3/4" I.D.)
 - (1) CC2000-45 Retaining Pin, Splined Shaft
 - (1) CC2000-48 Jack Pivot Pin
 - (1) CC2000-51 Seal Kit, Pump

Referring to the Parts Illustration, assemble the Clutch Caddy as follows:

1. Attach the Swivel Casters to the Rear Cross Member, Right Leg, and Left Leg using the 1/2-13 Hex Nuts and 1/2" Lock Washers.
2. Attach the Rear Cross Member to the Chassis Assembly using (4) 3/8-16 X 1" lg. Hex Head Cap Screws and 3/8" Lock Washers.
3. Attach the Right and Left Legs to the Chassis Assembly using (3) 3/8-16 X 1" lg. Hex Head Cap Screws and 3/8" Lock Washers for each leg.
4. Install the Jack into the Chassis Assembly: Place the Jack rod end into the Jack Anchor. Then insert Jack Pivot Pin through the 3/4" hole in the Lifting Arm Assembly and through the Jack. (It may be necessary to raise the Lifting Arm Assembly slightly to do this.) Install a Snap Ring at each end of the Jack Pivot Pin. Tighten the Set Screw in the Jack Anchor securely.

5. The fill plug screw in the jack is for shipping and handling purposes only. Remove it and replace it with the vented plug before using the Clutch Caddy.
6. Install the Holder Assembly into the Pivot Block. Tighten the Set Screw in the Pivot Block so that the Holder Assembly is retained, but can swivel freely.
7. Install the Splined Shaft into the Holder Assembly and insert the Retaining Pin.

OPERATING INSTRUCTIONS

Removing the Clutch:

1. Pivot the Holder Assembly so that the Splined Shaft is horizontal. Operate the Jack handle to raise the Lifting Arm Assembly so that the Splined Shaft is aligned with the clutch.
2. Tilt the Splined Shaft to align it with the clutch bore, then slide shaft into clutch. Turn Holder Adjusting Bolt so that the Splined Shaft will be held in this position. Note: Once the angle of the Splined Shaft is set, the clutch and flywheel can usually be removed and reinstalled without further adjustment.
3. Remove the clutch mounting bolts and back the Clutch Caddy and clutch away from the flywheel. Lower the Lifting Arm Assembly slightly. Then rotate the clutch to a flat position behind the Pivot Block, as shown in Figure 1.
4. Lower the clutch to the floor and remove it from the Clutch Caddy.

Installing the Clutch:

1. Pivot the Holder Assembly into the position shown in Figure 1 and place the clutch down onto the Splined Shaft. Note: It is easier to "build" the clutch on the Clutch Caddy, one piece at a time.
2. Raise the Lifting Arm Assembly slightly, and then rotate the clutch to an upright position, as shown in Figure 2.
3. Once the clutch is raised into position for installing, use the Holder Adjusting Bolt to tilt the clutch until it is aligned with the flywheel.
4. Push the Clutch Caddy and clutch towards the flywheel so that the Splined Shaft engages the pilot bearing in the flywheel. Install and tighten the clutch mounting bolts.

Removing Flywheels:

The CC2000 Clutch Caddy may be used to remove and install flywheels for both 14" and 15-1/2" clutches.

1. Install the CC2051 Flywheel Adapter onto the Clutch Caddy. Place the Adapter into the position shown in Figure 3.
2. Remove all but two (2) opposing bolts attaching the flywheel to the crankshaft.

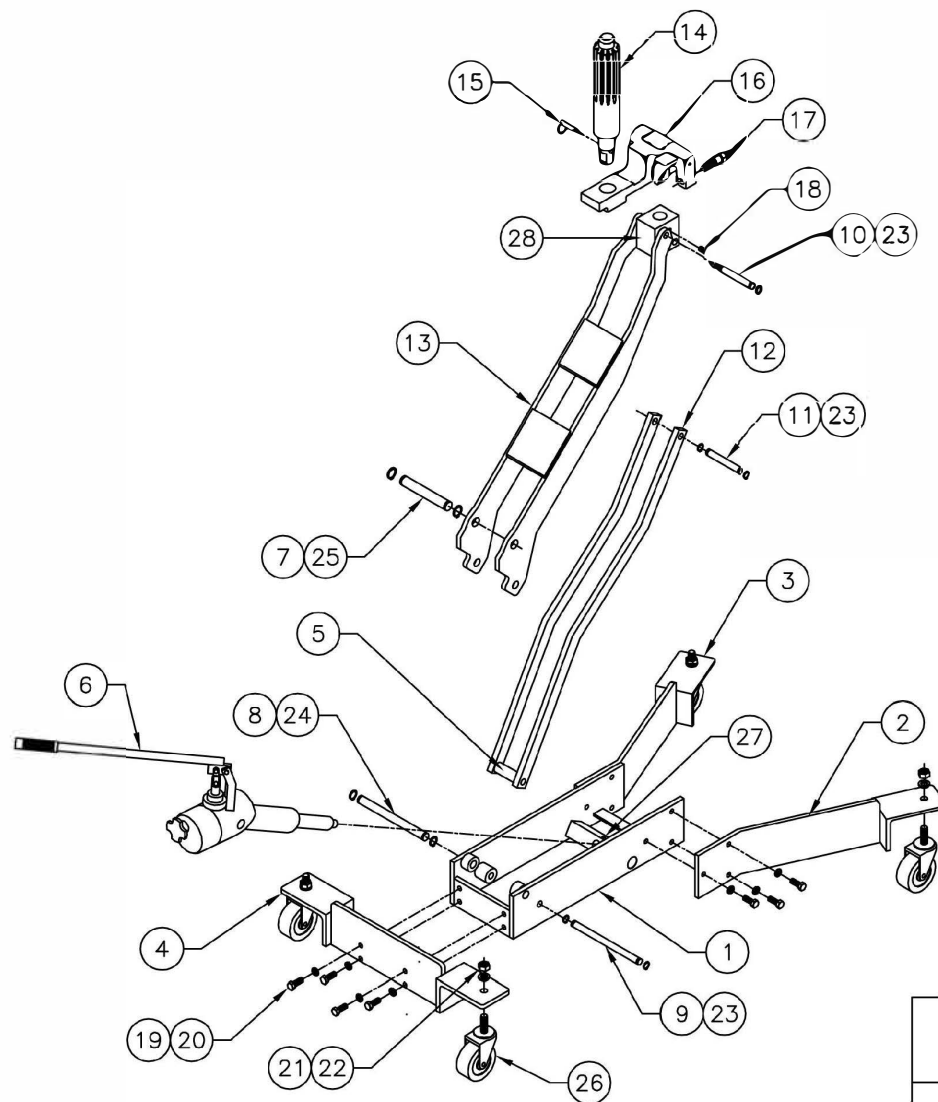
3. Raise the Lifting Arm Assembly. Using the Holder Adjusting Bolt, align the Adapter with the flywheel. Center the Adapter on the flywheel and bolt the Adapter to the flywheel.

The Adapter Plate must be vertical. Note: Flywheels for 15-1/2" clutches will require the use of the 1-1/2" long Spacer(s) between the flywheel and the Adapter.

4. Remove the remaining two (2) bolts attaching the flywheel to the crankshaft. Back the Clutch Caddy and flywheel away from the engine.
5. Lower the Lifting Arm Assembly until the flywheel is resting on the floor. Then, while supporting the flywheel, unbolt and remove it from the Adapter.

Installing Flywheels:

1. Install the CC2051 Flywheel Adapter onto the Clutch Caddy. Attach the flywheel as shown in Figure 4. Note: Flywheels for 15-1/2" clutches will require the use of the 1-1/2" long Spacer(s) between the flywheel and the Adapter.
2. Raise the Lifting Arm Assembly. Using the Holder Adjusting Bolt, align the flywheel with the crankshaft flange; install two (2) crankshaft bolts through the Access Slots in the Adapter Plate.
3. Unbolt the Adapter from the flywheel and move the Clutch Caddy away from the engine; install the remaining crankshaft bolts.



BILL OF MATERIALS			
ITEM	PART No.	DESCRIPTION	QTY.
1	CC2000-01	CHASSIS	1
2	CC2000-11	RIGHT LEG	1
3	CC2000-14	LEFT LEG	1
4	CC2000-16	REAR CROSS MEMBER	1
5	CC2000-24	SPACER, PARALLEL ARM	1
6	CC2000-20	JACK	1
7	CC2000-48	PIVOT PIN, JACK	1
8	CC2000-26	PIVOT PIN, LIFTING ARM	1
9	CC2000-27	PIVOT PIN, PARALLEL ARM	1
10	CC2000-28	PIVOT PIN, LIFTING ARM	1
11	CC2000-29	PIVOT PIN, PARALLEL ARM	1
12	CC2000-34	PARALLEL ARM	2
13	CC2000-39	LIFTING ARM ASSEMBLY	1
14	CC2000-44	SPLINED SHAFT - 2" DIA.	1
15	CC2000-45	RETAINING PIN	1
16	CC2000-49	CLUTCH HOLDER ASSEMBLY	1
17	201-64420	HOLDER ADJUSTING BOLT	1
18	242-62272	SET SCREW, HOLDER ASSEMBLY	1
19	201-64277	3/8-16 X 1" HHCS	10
20	207-61024	3/8 SPLIT LOCKWASHER	10
21	202-61440	1/2-13 HEX NUT	4
22	207-61028	1/2 SPLIT LOCKWASHER	4
23	241-62027	SNAP RING - 1/2"	6
24	241-62031	SNAP RING - 5/8"	2
25	241-62035	SNAP RING - 3/4"	2
26	300-00266	SWIVEL CASTER	4
27	242-62202	5/16-18 X 1/2 SHSS	1
28	CC2000-30	PIVOT BLOCK	1

NOTE:

- 1.) 1-3/4 DIA. SPLINED SHAFT IS AVAILABLE AS PART NO. CC2050.
- 2.) FLYWHEEL ADAPTER IS AVAILABLE AS PART NO. CC2051.

KIENE DIESEL ACCESSORIES

PARTS ILLUSTRATION
CC2000 CLUTCH CADDY

CURRENT REVISION: E | DATE: 10/4/2012 | DRAWING NAME: CC2000 PARTS ILLUSTRATION

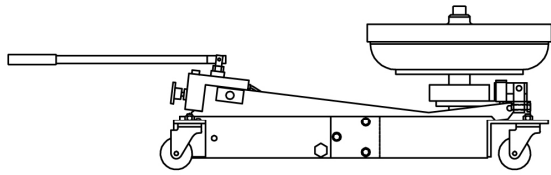


FIGURE 1

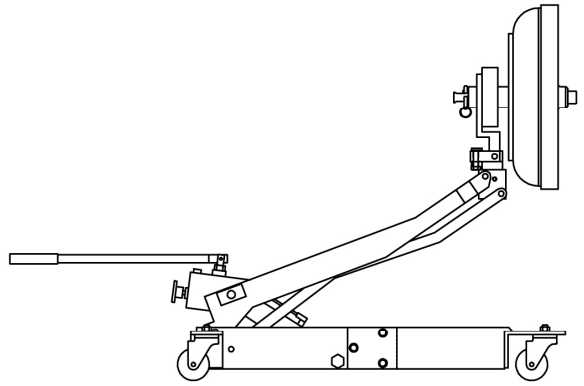


FIGURE 2

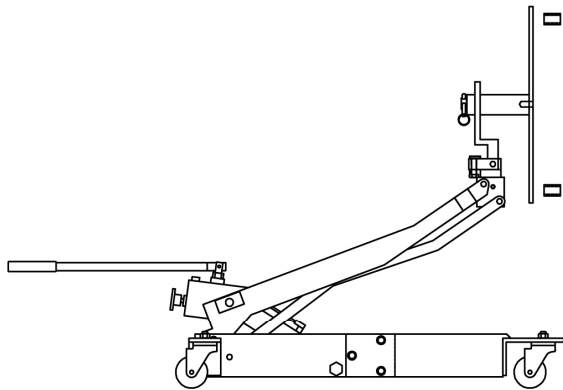


FIGURE 3

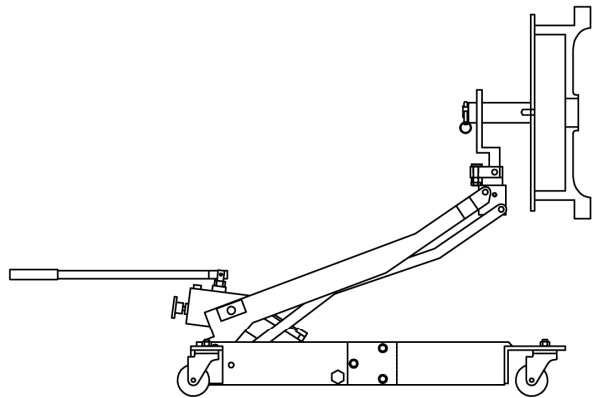


FIGURE 4